

PROSPECTUS

**School of  
Architecture,  
Planning and  
Policy  
Development**

Institut Teknologi Bandung

2020

© 2020 Institut Teknologi Bandung and the Authors.

No part of this book may be reproduced in any manner whatsoever without written permission from the publisher, except in the context of reviews.

PROSPECTUS is a production of the  
School of Architecture, Planning, and Policy Development,  
Institut Teknologi Bandung, Indonesia.

Printed in Bandung, Indonesia.

School of Architecture, Planning, and Policy Development,  
Institut Teknologi Bandung (ITB)  
Gedung Sugjianto Soegijoko - Labtek IX A  
Jl. Ganesha 10 Bandung 40132  
Indonesia

T (022) 250 46 25

F (022) 250 00 46

W [www.sappk.itb.ac.id](http://www.sappk.itb.ac.id)

**Text** : Kusyala, Soelaiman, Winarsito, Rahayu, Fuadah

**Fig** : Kusyala, Soelaiman, Rahayu

**Layout** : Alifiani, Alifa



*(courtesy: Yulianto, 2018)*



# MESSAGE FROM THE DEAN



The interactions between humans and their environments have unceasingly evolved, often in an unpredictable way, and brought about new shapes to our built-environments. While in the past time and space constrained those interactions, we are now witnessing a reverse pattern. The interactions have gradually changed the way we experience time and space, defining a new rhythm of life. Thus, we are now also entering the disruptive era, where everything is shifting, transforming and contesting. In the disruptive era, people are not only mentally challenged to create apt strategies and actions regarding the management of cultural property, but also to work in compliance and control the disruption.

With smart cities, equipped with high capacity ICT infrastructures and devices, space becomes densely connected and globally networked. Real-time circulation of information has enriched our experience of time and duration. With smart transportation, various modes of travelling have been integrated with spatially distributed destinations, including domestic, commercial and tourism destinations. With all of this, we re-define far and near and we experience events of life with different rhythms. The introduction of green settlements and infrastructures has drawn closer connection and promoted better balance between human dwellings and natural ecosystems. The advancements in nanotechnology and biotechnology, and their penetration into buildings technology and environments management has expanded further the interactions between social systems and ecosystems, offering new opportunities to be explored for future built environments. The widely discussed notion of Industrial Revolution 4.0 reflects the inter-twinning changes in various aspects of industrial activities and built environments. Our common challenges are now to promote better balance and more connections between urban and rural livelihoods, to promote inclusions of underprivileged communities

across the globe, and to draw closer connections between the present and future generations—the issue of sustainability.

The School of Architecture, Planning and Policy Development (SAPPD) Institut Teknologi Bandung (ITB) has since the beginning of its formation committed to pursue the goal of realizing sustainable built environments. We pursue this goal by conducting inter-disciplinary and trans-disciplinary researches, developing new and relevant architectural designs, urban and regional planning theories and methodologies, and formulating policy scenarios. In the school we nurture an environment that is suitable for creative thinking, inter- and trans-disciplinary dialog, and learner-centered learning. Faculty members and students of the school are actively engaged with various groups of the societies at the local, national and international levels, constantly in pursuit of innovation and creation. We have been passionately working for delivering academic and research excellence within an inspiring and supportive learning environment, and to provide best services for the society.

In the 2018 Prospectus, we present overview of the last two-year period of our academic progresses, research projects, international and domestic co-operations, and our engagements with and contributions to various partners. The document includes also brief descriptions about the faculty, academic programs, research groups, collaboration between faculty members of the school and agents from various governmental institutions, and private sectors, as well as leader of local communities, and also the organization of regular international meetings and seminars in which various participants meet, exchange new ideas, and discuss programs for collective actions.

Prof. Widjaja Martokusumo  
Dean

# CONTENT

---

<b>Message from The Dean</b>	<b>iv</b>
<b>Content</b>	<b>v</b>
<b>Institut Teknologi Bandung</b>	<b>06</b>
<b>The School of Architecture, Planning and Policy Development</b>	<b>08</b>
<b>Profile</b>	<b>10</b>

---

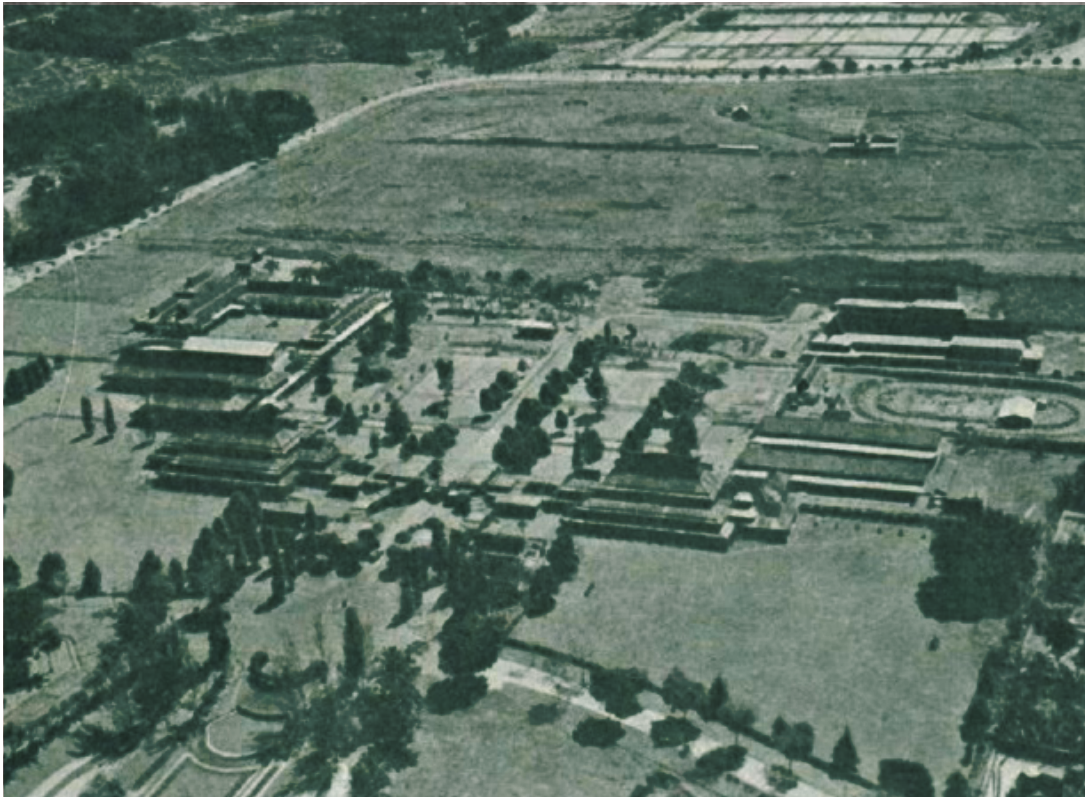
<b>Academic Program</b>	<b>13</b>
Architecture	16
Urban & Regional Planning	20
Urban Design	26
Development Studies	28
Transportation	30
Tourism Planning	34
Landscape Architecture	36

---

<b>Academic Activities</b>	<b>39</b>
<b>Research Groups</b>	<b>45</b>
Architectural Design	46
Building Technology	48
Housing and Settlement	50
Architectural History, Theory, and Critique	52
Regional and Rural Planning	54
Urban Planning and Design	56
Regional and City Infrastructure System	58
Policy Planning and Development Management	60
Economic System and Modelling	62
ITB Multikampus at Cirebon	64
Community Services	64

---

<b>Miscellaneous</b>	<b>65</b>
----------------------	-----------



“Officially ITB was inaugurated by Sukarno, the first President of the Republic of Indonesia, *March 2, 1959.*”

# INSTITUT TEKNOLOGI BANDUNG

---

**T**he present Institut Teknologi Bandung (ITB) main campus is the site of earlier engineering schools in Indonesia.

Starting in 1920, Technische Hogeschool (TH) was founded in Bandung, which for a short time, in the middle forties, became Kogyo Daigaku. Soon after the birth of the Republic of Indonesia in 1945, the campus housed the Technical Faculty (including a Fine Arts Department) of Universitas Indonesia, with the head office in Jakarta. In the early fifties, the Faculty of Mathematics and Natural Sciences, also part of Universitas Indonesia, was established on the campus. Although these institutions of higher learning had their own individual characteristics and missions, they left influence on developments leading to the establishment of the present ITB. Officially ITB was inaugurated by the first president Sukarno on March 2, 1959 as an institution of higher learning of science, technology, and fine arts, with a mission of education, research, and service to the community.

*University is a house of learning,  
an agent of change and progress,  
an agent of social control,  
a conscience and the lighthouse for the nation,  
a producer of leaders...*

Until 2000 ITB was a state university, and then became a quasi-autonomous university from 2000-2010. Government Decree No.155/2000 pertaining to the Decision on ITB as Legal Enterprise (Badan Hukum) has opened a new path for ITB to become autonomous. The status of autonomy implies a freedom for the institution to manage its own business in an effective and efficient way, and to be fully responsible for the planning and implementation of all program and activity, and the quality control for the attainment of its institutional objective. The institution has also a freedom in deciding its measures and taking calculated risks in facing tight competition and intense pressures.

From 2009-2010 ITB with the other six universities (Higher Education of State-owned Legal Entity-BHMN) turned into a Legal Body of Education (BHP). Following this, the so-called State University by Law (PTN BH) was respectively established, as enacted in the new Higher Education Law 12/2012. However, such dramatic institutional changes must still address several important issues, e.g. quality and development of higher education, widening access and equity, respecting diversity, enhancing autonomous and accountability that has become an essential part of today's university. Although the status has become the State University by Law, the issues on accountability and autonomy are still becoming the challenging issues, and play absolutely an important role in the future of higher education institutions.





# THE SCHOOL OF ARCHITECTURE, PLANNING AND POLICY DEVELOPMENT



The School was established on 29 August 2005 by a decree from Rector of ITB (No. 222/2005) which intends to re-organize academic units of ITB, adding the total numbers of faculty / school from 7 (seven) to 11 (eleven). However, the constituents of the school are not new, as it draws all academic programs and resources from 2 (two) existing departments namely: Architecture, established in 1950 and Urban and Regional Planning, established in 1959 previously under the Faculty of Civil Engineering and Planning, and 2 (two) existing academic programs (namely: Development Studies and Transportation ) previously under the Faculty of Industrial Engineering. The newly established school began to





operate as an academic implementation unit responsible for education, research and community service activities starting from 1 January 2006, administering 11 academic programs ranging from undergraduate to doctoral program, 8 research groups, 82 faculty members, 44 supporting staffs, and around 1410 students. Since 2016 there were 12 academic programs ranging from undergraduate to doctoral program, 9 research groups, 118 faculty members, 44 supporting staffs, and ca. Our student body is currently 1524 undergraduate and graduate students (Jan 2019).

The School of Architecture, Planning and Policy Development (SAPPD) encompasses seven main professional disciplines: architecture, urban and regional planning, urban design, transportation, development studies, tourism planning and landscape architecture. It aims to produce professionals in the sustainable built environment who are skilled in investigation, analysis, problem solving and communication, and are motivated to contribute significantly to the professional and community life.

In line with the Statute of ITB, the School of Architecture, Planning and Policy Development is entrusted with a task to nurture and develop scientific knowledge, conducive academic culture and community, and worldwide networks and initiatives.





# PROFILE

## VISION

To be a leading educational and research institution in Asia, with excellent international reputation in the fields of planning, design and policy development of sustainable built environment.

## MISSION

1. To contribute significantly to the creation and dissemination of scientific knowledge in the fields of planning, design and policy development of sustainable built environment, and to implement it appropriately and with excellence for the benefit of public welfare and sustainable environment, to improve institution capacity and support human resources, from the local to the national, through synergy of education, research and public service activities.
2. To develop educational programs in the fields of planning, design and policy development of sustainable built environment, which are able to nurture creative and critical thinking, as well as ethical and responsible attitudes to the graduates, who are expected to become professionals, entrepreneurs, leaders and agents of change in the society.
3. To foster academic endeavours and collaborative undertakings, with particular interest in the issues of: good governance; community based and participatory approach; local knowledge, culture and identity; harmonization of the global, the central and the local.

## GUIDING VALUES

In achieving its vision and mission, the School of Architecture, Planning and Policy Development is committed to upholding the following values:

- Quality
- Ethics
- Equity
- Social Justice

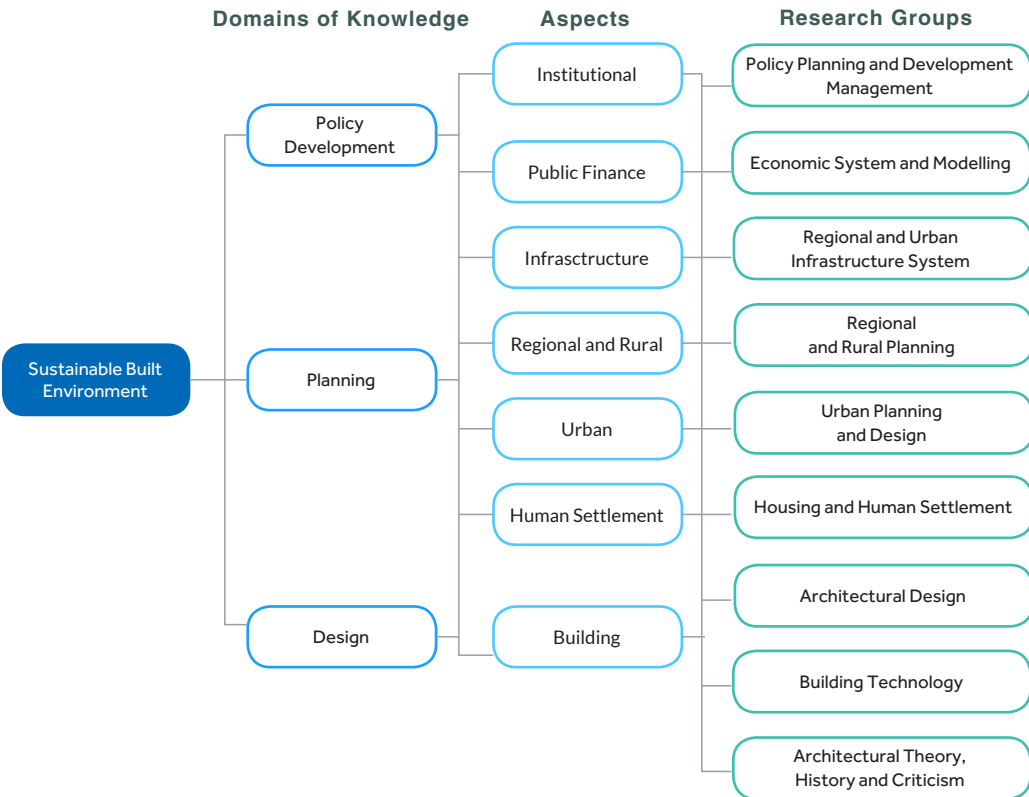
and strongly abide by the following principles:

- Shared governance and collaboration
- Diversity, dignity, integrity

# BODY OF KNOWLEDGE

The School of Architecture, Planning and Policy Development encompasses seven main professional disciplines: architecture, urban and regional planning, urban design, transportation, development studies, tourism planning and landscape architecture. The School aims at producing professionals in the sustainable built environment who are skilled in investigation, analysis, problem solving and communication, and are motivated to contribute significantly to professional and community life.

Advances in scientific knowledge is systematically integrated into roadmaps of 9 research groups, comprising domains of policy development, planning and design of sustainable built environment, addressing institutional, infrastructure and spatial aspects at regional, rural, urban, human settlement and building scales.





## INTERNATIONALISATION

Since 2005, Institut Teknologi Bandung has initiated its internationalization strategy in order to strengthen the international dimension of all programs. The past few years have seen the swift expansion of international cooperation with other universities abroad in education as well as research programs.

The School of Architecture, Planning and Policy Development has given a high priority to the internationalization of study program, motivated by the need for academic staff and students to acquire knowledge and competences that would assist them internationally. The School has extensive links and exchange agreements with a number of leading universities world wide. Our strategic partners abroad include:

- Germany: University of Applied Sciences Erfurt, Giessen University
- The Netherlands: The Royal University of Groningen, The University of Twente/ITC
- Canada: Toronto University
- Japan: Kobe University, Keio University, Ritsumeikan University, Yamaguchi University, Miyazaki University, Kitakyushu University, Tokyo Institute of Technology, Kyushu University, Shibaura Institute of Technology, Hiroshima University.
- USA: University of Florida, University of Hawaii, Manoa.
- Malaysia: University of Malaya, UiTM.
- Cebu: University San Carlos, College of Architecture & Fine Arts.
- Australia: Univ. of Melbourne, Univ. of Sydney.

Staff and students exchanges, international double degree master programs, collaborative studios and workshops etc. contribute to the international dimension of programs as well as the international qualifications of students. The School also

maintains close links with the appropriate professional institutes in the country and abroad, each of which recognises academic qualifications awarded by the School.

They include:

- Ikatan Arsitek Indonesia/ Indonesian Architects Association (IAI), Asosiasi Pendidikan Tinggi Arsitektur Indonesia (APTARI)/ Indonesian Association of School of Architecture (IASA), American Collegiate School of Architecture (ACSA), Ikatan Arsitek Lanskap Indonesia/ Indonesian Society of Landscape Architect (IALI), Korea Architectural Accrediting Board (KAAB).
- Ikatan Ahli Perencanaan Indonesia/ Indonesian Association of Planners (IAP), Indonesian Regional Science Association (IRSA), American Planning Association (APA), Asian Planning School Association, AEROPH, Canadian Institute of Planners (CPI)

# **ACADEMIC PROGRAMS**



School of Architecture, Planning and Policy Development offers a number of undergraduate and postgraduate degree programs relevant to the creation of new knowledge as well as to the national development challenges and demands of the society. The academic programs include:

### **Architecture**

Undergraduate  
Master  
Doctoral

### **Urban & Regional Planning**

Undergraduate  
Master  
Doctoral

### **Urban Design**

Master

### **Transportation**

Master  
Doctoral

### **Development Studies**

Master

### **Tourism Planning**

Master

### **Landscape Architecture**

Master

#### **Institut Teknologi Bandung**

Jl. Ganesa 10, Bandung,  
Indonesia 40132  
Phone: +62 22 250 4625  
Fax: +62 22 250 0046  
[www.sappk.itb.ac.id](http://www.sappk.itb.ac.id)



## INTERNATIONAL ACCREDITATION

ACADEMIC PROGRAM	UNDERGRADUATE	MASTER
Architecture	International Accredited by KAAB 	
Urban and Regional Planning	International Accredited by ASIIN* 	

Several study programs in SAPPD have been internationally accredited by two different institutions. Architecture program, particularly for undergraduate program and master graduate program (design stream), obtained an international accreditation from KAAB (Korea Architectural Accrediting Board), in 2016.

Recently, both programs have carried out an extension to KAAB. The urban and regional planning undergraduate program had been assessed by the visitation team in October 2018, waiting for results in 2019. The curriculum and education program in SAPPD has met internationally acknowledged standards.



## NATIONAL ACCREDITATION

ACADEMIC PROGRAM	UNDERGRADUATE	MASTER	DOCTORAL
Architecture	A	A	A
Urban and Regional Planning	A	A	A
Urban Design		A	
Transportation		A	A
Development Studies		A	
Tourism Planning		A	
Landscape Architecture		A	

*unggulan* *unggulan* *unggulan*

In 2017-2018, all study programs at SAPPD ITB received accreditation from BAN-PT - National Accreditation Board-Higher Education with predicate 'A', an increase from the previous years.

This shows that the quality of education and curriculum of all study programs at SAPPD ITB from undergraduate (S1) until Doctoral Program (S3) is good nationally.



# ARCHITECTURE

**A**rchitecture as a built environment is developed for human needs as dictated by a cultured living. The fulfillment of physical and spiritual needs is then interpreted into space and form by the architect. Through spatial design and form, the architect tries to create positive influence on the environment and people. In that sense architecture can be viewed as an adaptive optimization of various normative values and external factors, which continuously seek balance and final form. It is a process that requires creative, imaginative and innovative research and design, based on rational and empirical knowledge.

The architectural program at ITB was established in October 25th 1950. It envisions itself as a regional/southeast-asian hub for learning of tropical architecture and sustainable built environment on developing countries. The educational program is focused on the development of capacity to comprehend a wide range of issues required to answer the challenges that lie ahead in the field of architecture. Broad-based curriculum is introduced to catch up with the science of architecture that grows and develops in tandem with changes of human civilization and culture, science and technology, art and design.

The curriculum for undergraduate and graduate degree programs are developed as an integrated structure, taking into consideration the following aspects:

- The development of professions in the field of architecture.
- The development of architecture as a scientific discipline.

The philosophic underpinning of curriculum are: Life-long Learning, Knowledge-based Learning, Student Centered Learning.

Graduates of the program are expected to be professional, practicing architects and/ or development practitioners who have wide knowledge in architectural design and built environment issues. Their levels of competence are stratified according to the degree awarded:

- Sarjana or Undergraduate degree program: Basic Knowledge and Competence
- Magister or Master degree program: Professional Knowledge and Competence
- Doktor or PhD degree program: Knowledge Development and Dissemination through Scientific Publication

## UNDERGRADUATE PROGRAM

Commencement semester	: August
Duration	: 8 semesters full-time, including 2 semesters of Common First Year program
Credit units	: 144 minimum
Admission requirements	: Invitation and written test; National university entrance examination
Degree Granted	: Sarjana Arsitektur (S.Ars) (equivalent to Bachelor of Architecture Degree in USA)

### PROGRAM OUTLINE

The architectural students are provided with basic knowledge and skills that prepare them to enter professional practices in the field of design, production and management of the built environment and/or to pursue advanced architectural training and education.

The emphasis of undergraduate curriculum is on design of buildings, involving studies on aesthetic principles, building technology, history and theory, housing and human settlement. Architecture design studios as the core of undergraduate curriculum serve as laboratories for the exploration of analytical and creative reasoning, the critique of design solutions, and most importantly, the integration of different knowledge streams.

In January 2016, SAPPD ITB obtained international accreditation from the KAAB (Korea Architectural Accreditation Board) valid until 2025. The professional degree in architecture program consists of four years of undergraduate program and one year (two semesters) of the graduate /master program. At ITB the professional degree is integrated with the master program.

### ADDRESS

Institut Teknologi Bandung  
Gedung Laboratorium Teknik (Labtek) IX-B  
Jl. Ganesa 10, Bandung 40132, Indonesia  
(022) 2504962 (p)  
(022) 2530705 (f)  
www.ar.itb.ac.id (w)  
www.sps.itb.ac.id (w)  
aswin@ar.itb.ac.id (e)

### CAREER OPPORTUNITIES

Students with a Sarjana Teknik Degree in Architecture may opt for careers in professional practices as architect's assistant or other careers related to building design, construction, management and policy in government offices, developers, contractors, non-government organizations or freelance practitioners. Recent graduates are working in the Indonesia and abroad.

### PROFESSIONAL MEMBERSHIPS

Graduate of this degree may be eligible for membership, and after fulfillment of certain requirements, also registration with Indonesian Architects Association (Ikatan Arsitek Indonesia).

### CURRICULUM

To maintain its standard of quality and compatibility at national as well as international levels, the undergraduate curriculum is designed with reference to levels of competence set up by:

- Union Internationale des Architectes (UIA) / UNESCO Charter for Architectural Education (April 1996)
- Korea Architectural Accrediting Board (KAAB)





## MASTER PROGRAM

Commencement semester	: August
Duration	: 4 semesters full-time
Credit units	: 36 minimum
Admission requirement	: Bachelor degree in Architecture and other related fields, Academic Potential Test, English Proficiency Test, Interview. Additional portfolio of previous design works will be appreciated.
Degree Granted	: Magister Arsitektur (M.Ars) (equivalent to Master of Architecture Degree)

### PROGRAM OUTLINE

The Master Program in Architecture provides students with the opportunity to develop advanced knowledge and skills for professional practice in the public as well as private sectors and in academic domains. It allows students the opportunity for in-depth study in the fields of architectural design and research.

In January 2016, SAPPD ITB obtained international accreditation from the KAAB (Korea Architectural Accreditation Board). The professional degree is integrated with the master program (Architectural Design).

### ADDRESS

Institut Teknologi Bandung  
Gedung Laboratorium Teknik (Labtek) IX-B  
Jl. Ganesa 10, Bandung 40132, Indonesia  
(022) 2504962 (p)  
(022) 2530705 (f)  
[www.ar.itb.ac.id](http://www.ar.itb.ac.id) (w)  
[www.sps.itb.ac.id](http://www.sps.itb.ac.id) (w)

### CAREER OPPORTUNITIES

Graduates of this program are employed in a wide range of consultant offices, government and non-government organizations, as practitioners, managers, researchers and policy makers. Some graduates use this qualification as a basis for entering private practice.

### PROFESSIONAL MEMBERSHIPS

Graduate of this degree may be eligible for membership, and after fulfillment of certain requirements, also registration with Indonesian Architects Association (Ikatan Arsitek Indonesia).

### CURRICULUM

The curriculum for master degree program is differentiated into 2 (two) major fields of study:

- Architectural Design
- Architectural Research



## DOCTORAL PROGRAM

Commencement semester	: August, January
Duration	: 3-4 years full-time
Credit units	: 43 minimum
Admission requirements	: Master degree in Architecture and other related fields, Academic Potential Test, English Proficiency Test, Interview
Degree Granted	: Doctor (equivalent to PhD Degree)

### PROGRAM OUTLINE

The doctoral program offers a specialized academic endeavour in the fields of architectural design, building technology, housing and human settlement, and architectural history, theory and criticism. The objective of the program is to develop independent research skills and an ability to relate a specific research topic to a broad framework of knowledge in a relevant discipline area. Doctoral candidates develop capacity to formulate significant problem; to master appropriate conceptual and methodological skills; and to carry out an original program of research.

Students will be assigned an academic supervision committee with whom they will work to pursue their research. All students are required to take a qualifying examination before initiating their research for doctoral dissertation. Students who have obtained the status of doctoral candidate and completed their dissertation must pass a final examination and have their dissertation approved by the examination committee.

### CURRICULUM

Since 2013, the doctoral curriculum is divided into 4 (four) consecutive phases:

- First phase: courses (architectural research methodology, colloquium and qualifying or preparatory examination (14 credits)
- Second phase: proposal writing (3 sks)  
Students are required to have 12 months residence period in the campus and pass the qualifying examination.
- Third phase: research and dissertation writing (20 credits)
- Fourth phase: Dissertation examination (3 credits)

### ADDRESS

Institut Teknologi Bandung  
Gedung Laboratorium Teknik (Labtek) IX-B  
Jl. Ganesa 10, Bandung 40132, Indonesia  
(022) 2504962 (p)  
(022) 2530705 (f)  
[www.ar.itb.ac.id](http://www.ar.itb.ac.id) (w)  
[www.sps.itb.ac.id](http://www.sps.itb.ac.id)(w)





## URBAN AND REGIONAL PLANNING

Urban and regional planning activities have been in constant development and are increasingly becoming more complex, covering not only the spatial or physical aspects of sustainable built environment, but also the multitude of non physical aspects involving various disciplines and stakeholders. Urban and regional planners are required to be knowledgeable about the field and have professional skill pertaining to the allocation

and spatial distribution of land uses and functions required by society, devising and administering land zoning schemes, resolving conflicts between competing demands for land development, ensuring that housing and public facilities are well located and conveniently placed, and helping to decide which developments should proceed and which buildings or spaces should be preserved.

The undergraduate program in Urban and Regional Planning at ITB was established in September 1959, with initial help from experts from Harvard University under the auspices of the United Nations Technical Assistance Bureau (UNTAB). To keep up with the increasing need for specialized professional expertise, a master program in Urban and Regional Planning was established at ITB in August 1982 with technical assistance from the Development Planning Unit, University College London and the Department of Public Works. The establishment of a doctoral program in Urban and Regional Planning at ITB was then followed in 1986.

The Urban and Regional Planning Program at ITB is designed to become the key center for the theory and practice of urban and regional planning and policy in Indonesia. The program provides high quality of planning education, scholarly planning research, and best planning service for the public. The program educates students who wish to combine social concerns and analytical skills in dealing with the issues of urban & regional planning and policy in Indonesia.

Graduates of the program are expected to be professional, practicing planners and/or development practitioners who have wide knowledge in urban and regional planning issues. Their levels of competence are stratified according to the degree awarded:

- Sarjana or Undergraduate degree program: Basic competence for urban and regional planning activities with simple level of interaction and generic behaviour.
- Magister or Master degree program: Professional competence for urban and regional planning activities, including ability to carry out comprehensive study and develop problem solution, to raise an awareness of its implication for the society, and to communicate it in persuasive manner.
- Doktor or PhD degree program: Ability to conduct research independently, to develop knowledge in the field of urban and regional planning and to communicate and disseminate it through scientific publication.



## UNDERGRADUATE PROGRAM

Commencement semester	: August
Duration	: 8 semesters full-time, including 2 semesters of Common First Year program
Credit units	: 144 minimum
Admission requirements	: invitation and written test; National university entrance examination
Degree Granted	: Sarjana Teknik (equivalent to Bachelor of Science Degree)

### PROGRAM OUTLINE

The Sarjana or undergraduate program is designed to equip graduates with basic knowledge, skill and attitude required as planners, emphasizing on their ability to think in rational, analytical, comprehensive, strategic way, in order to develop best alternative solutions to the problem, which are technically justifiable, socially acceptable and morally responsible.

### CAREER OPPORTUNITIES

Graduates with a Sarjana Teknik Degree in Urban and Regional Planning are qualified to work as planners for local and regional councils, government agencies, planning consultancies, property developers, research institutes, and non-government organizations.

### PROFESSIONAL MEMBERSHIPS

Graduate of this degree may be eligible for membership with ITB Alumni Association (Ikatan Alumni/ IA ITB) and applying for membership for Indonesian Planners Association (Ikatan Ahli Perencana Indonesia / IAP).

### CURRICULUM

To maintain its standard of quality and compatibility at national as well as international levels, the undergraduate curriculum is designed with reference to the levels of competence set up by:

- Planning Accreditation Board (PAB), an accrediting body for planning school recognized by the Council for Higher Education Accreditation (CHEA) in the United State
- Association of Collegiate Schools of Planning (ACSP)
- Akkreditierungsagentur für Studiengänge der Ingenieurwissenschaften, der Informatik, der Naturwissenschaften (ASIIN - Germany)

### ADDRESS

Institut Teknologi Bandung  
Gedung Sugjanto Soegijoko - Labtek IX A  
Jl. Ganesa 10, Bandung 40132, Indonesia  
(022) 2509171 (p)  
(022) 2501263 (f)  
[www.pl.itb.ac.id](http://www.pl.itb.ac.id) (w)  
[itbpwk@pl.itb.ac.id](mailto:itbpwk@pl.itb.ac.id) (e)





## MASTER PROGRAM

Commencement semester	: August
Duration	: Regular Program : 4 semesters full-time, can be completed in 18 months for intensive classes. International Double Degree Program : 2 semesters full time at ITB plus 2 semesters full time at partner universities in the Netherlands, Japan, or the USA.
Credit units	: 36 minimum
Admission requirements	: Bachelor degree in Urban and Regional Planning and other related fields, Academic Potential Test, English Proficiency Test, Interview. Attendance in preparatory program prior to regular academic program is a requisite.
Degree Granted	: Magister Perencanaan Wilayah dan Kota (MPWK) (equivalent to Master Degree)

### PROGRAM OUTLINE

The Master Program in Urban and Regional Planning is designed to attain the following objectives:

- To train professional practitioners who are well equipped with up to date knowledge and analytical skill in the field of urban and regional planning.
- To develop the capacity of planners, development managers, and decision makers at the central, regional and local levels, and to build their ability to think in analytical, integrated and comprehensive way.
- To train academic practitioners who are conversant with planning theory, method, and synthesis, and accordingly ready to support and develop similar education program at other universities in Indonesia.
- To train researchers in the field of urban and regional planning, who excel in problem identification, research methodology, analysis and interpretation, and development of alternative solutions.

### CAREER OPPORTUNITIES

Graduates of this program find employment in central, regional or local governments and development organizations in both public and private sectors.

### PROFESSIONAL MEMBERSHIPS

Graduate of this degree may be eligible for membership with Indonesian Planners Association (Ikatan Ahli Perencana Indonesia) and ITB Alumni Association (Ikatan Alumni/ IA ITB).

### ADDRESS

Institut Teknologi Bandung  
Gedung Sugijanto Soegijoko - Labtek IX A  
Jl. Ganesa 10, Bandung 40132,  
Indonesia  
(022) 2504735 (p)  
(022) 2501263 (f)  
[www.pl.itb.ac.id/pwk](http://www.pl.itb.ac.id/pwk) (w)  
[www.sps.itb.ac.id](http://www.sps.itb.ac.id) (w)  
[pm-pwk@pl.itb.ac.id](mailto:pm-pwk@pl.itb.ac.id) (e)

## CURRICULUM

The curriculum for master degree program is differentiated into 2 (two) categories:

1. Regular program, delivered in Bahasa Indonesia, with 5 (five) specialized fields: Regional Development, Urban Planning, Urban Management, Infrastructure and Transportation System, and Disaster Mitigation.
2. International Double Degree program, delivered in English, with 2 (two) specialized fields:
  - Development Planning and Infrastructure Management, administered in collaboration with Royal University of Groningen / RUG and International Institute for geo-Information Science and Earth Observation / ITC in the Netherlands, and University of Florida, USA.
  - Regional Development and Policy Analysis, administered in collaboration with several universities in Japan, namely: Keio University, Ritsumeikan University (Engineering and Policy Science), Hiroshima University, Yamaguchi University, and Miyazaki University.

The international double degree program is designated for Bappenas sponsored students who are already engaged as planning officers at central, regional and local government institutions in Indonesia. However, individual students interested in participating in the program are also welcome. Students will spend the first year of their two years study period at ITB, and continue the second year at the relevant partner universities in the Netherlands, Japan or the USA. Upon completion of their studies and fulfillment of all academic requirements from both universities, the students will be granted two degrees, one from ITB (degree: Magister Perencanaan Wilayah dan Kota/MPWK) and the other from relevant partner university in the Netherlands, Japan or the USA (degree: varied according to each university).





## DOCTORAL PROGRAM

Commencement semester	: August, January
Duration	: 3-4 years full-time
Credit units	: 40 minimum for students with similar academic background, and 52 minimum for students with different academic background
Admission requirements	: Master degree in Urban and Regional Planning and other related fields, Academic Potential Test, English Proficiency Test, Interview.
Degree Granted	: Doktor (equivalent to PhD Degree)

### PROGRAM OUTLINE

The doctoral program offers a specialized academic endeavour in the fields of regional and rural planning, urban planning and design, regional and urban infrastructure system, and policy planning and development management. The objective of the program is to develop independent research skills and an ability to relate a specific research topic to a broad framework of knowledge in a relevant discipline area. Doctoral candidates develop a capacity to create knowledge and to communicate and disseminate it to the academic community and the general public. Students will be assigned an academic supervision committee with whom they will work to pursue their research. All students are required to take a qualifying examination before initiating their research for doctoral dissertation. Students who have obtained the status of doctoral candidate and completed their dissertation must pass a final examination and have their dissertation approved by the examination committee.

### CURRICULUM

Since 2013, the doctoral curriculum is divided into 4 (four) consecutive phases:

- First phase: research methodology, colloquium and qualifying or preparatory examination and additional elective courses (in total 14 credits for students with similar academic background, 26 credits for students with different academic background). Students are required to have 12 months residence period in the campus and pass the qualifying examination.
- Second phase: proposal writing (3 credits)
- Third phase: research and dissertation writing (20 credits)
- Fourth phase: Dissertation examination (3 credits)

### ADDRESS

Institut Teknologi Bandung  
Gedung Sugijanto Soegijoko - Labtek IX A  
Jl. Ganesa 10, Bandung 40132, Indonesia  
(022) 2504735, 2509171 (p)  
(022) 2501263 (f)  
[www.pl.itb.ac.id](http://www.pl.itb.ac.id) (w)  
[www.sps.itb.ac.id](http://www.sps.itb.ac.id) (w)  
[pd-pwk@pl.itb.ac.id](mailto:pd-pwk@pl.itb.ac.id) (e)  
[cc : jeane@pl.itb.ac.id](mailto:cc:jeane@pl.itb.ac.id) (e)







## URBAN DESIGN

Urban design as a distinct field began to gain attention in Indonesia at the end of 1980s and has expanded considerably since that time, in response to the needs for better urban design knowledge and skills for design professionals in general, and for government officers at local, regional and national planning boards in particular, to support the implementation of national policy on regional autonomy. More and more planning board officers nationwide are required to prepare and evaluate urban design policies, strategies, concepts, guidelines, master plans and development programs, as well as be involved in the detailed design and management of urban spaces, which demands better appreciation of urban structure and context.

Urban design approaches, concepts and principles learned from developed countries are not fully implementable to solve multitude problems that challenge Indonesia at present and in the future, due to great differences in socio cultural, political, economics and natural physical contexts. Indonesia ultimately needs to develop its own urban design and development approaches, concepts and principles, which are based on and accordingly relevant to its own contexts and experiences. The initiative to establish a master degree

program in Urban Design at ITB began in 1992, supported by a number of dedicated academic staff from the Department of Urban and Regional Planning and Department of Architecture. It was not until February 2007 that the initiative could be fully realized. The Program introduces students to the fundamental theories, methods, and substantive content of urban design, and provides them with professional knowledge and skills through a series of urban design studio practice. Strong emphasis is given to the process of designing and creative contribution to the resolution of urban problems through design.



## MASTER PROGRAM

Commencement semester	: August
Duration	: Regular Program : 4 semesters full-time, could be completed in 3 semesters by dedicated and hard working students.
Credit units	: 36 minimum
Admission requirements	: Bachelor degree in architecture, planning and other related fields, Academic Potential Test, English Proficiency Test, Interview. Additional portfolio of previous design works will be appreciated.
Degree Granted	: Magister Rancang Kota (MRK) (equivalent to Master of Urban Design)

### PROGRAM OUTLINE

The Master program in Urban Design aims to produce skilled, creative and professional urban designers capable of undertaking decisions in urban design and development, to work in a multidisciplinary team, to uphold ethical principles and sustainability of the environment, and are ready to compete in the global market.

### CAREER OPPORTUNITIES

Graduates of this program occupy important positions in local, regional and national planning boards, and private consulting companies.

### PROFESSIONAL MEMBERSHIPS

So far, no specific professional association at national level is available for the alumni of the program to register. Nevertheless, they are eligible to join ITB Alumni Association (Ikatan Alumni/ IA ITB).

*mohon ijin  
menambahkan  
IAR KI .*

### CURRICULUM

The curriculum is designed to equip the students with the capacity to undertake innovative problem solving of urban issues through design; and to comprehend and appreciate local characteristics as the basis for an integrated and multidisciplinary approach to a humane urban design and development concept. At its core are studio projects that address emerging design issues and course subjects that cover morphological, ecological, cultural, legal and other dimensions of urbanism.

To maintain its standard of quality and compatibility at national as well as international levels, the curriculum is designed with reference to levels of competence set up by:

- Union Internationale des Architectes (UIA) / UNESCO Charter for Architectural Education (April 1996)
- Planning Accreditation Board (PAB)

### ADDRESS

Institut Teknologi Bandung  
Gedung Laboratorium Teknik (Labtek) IX-B  
Jl. Ganesa 10, Bandung 40132, Indonesia  
(022) 2504962 (p)  
(022) 2530705 (f)  
[www.ar.itb.ac.id/rk](http://www.ar.itb.ac.id/rk) (w)  
[www.sps.itb.ac.id](http://www.sps.itb.ac.id) (w)





## DEVELOPMENT STUDIES

**D**evelopment Studies is a multi-disciplinary field of study that deals with three aspects of development: theory, strategy and ideology. Development Studies at the School of Architecture, Planning and Policy Development ITB focuses on the understanding of theories, normative principles, and strategies of development within a holistic framework that takes into account aspects of economy, politics, socio-cultural, technology, humanity and sustainable environment. It endeavors to provide the state of the art in the field of development studies, to achieve academic excellence and to enhance its role in the development process of the Indonesian society.

The academic program is designed as such to enable participants with both 'hard' and 'soft' sciences background to attend and gain benefit from it. As such the Program is relevant for policy makers, public administrators, business persons and bankers, politicians, engineers, NGO staff, and researchers. The Program provides an academic environment that allows students from a multitude background to interact and exchange ideas as well as information with researchers from various centers at ITB.

The learning system is designed to response to development issues that exist in the society. Case study materials and contextual issues are discussed, and development actors are invited as guest lectures. Students are encouraged to investigate issues encountered in their immediate environment for further exploration through thesis work.

## MASTER PROGRAM

Commencement semester	: August
Duration	: Regular Program : 4 semesters full-time, can be completed in 13 to 18 months for intensive classes.
Credit units	: 36 minimum
Admission requirements	: Bachelor degree in various fields, Academic Potential Test, English Proficiency Test, Interview.
Degree Granted	: Magister Studi Pembangunan (MSP) (equivalent to Master Degree)

### PROGRAM OUTLINE

Students of Development Studies program are taught to think critically, provided with analytical and modeling skills, and trained to develop strategy with futuristic orientation. Students are exposed to development issues from the multitude of perspectives and are trained to formulate strategies that are realistic and ethical. Through class discussion and thesis supervision, students are guided to conduct synthesis of multidisciplinary sciences in order to answer development problems encountered in their working environment.

### CAREER OPPORTUNITIES

More than 400 alumni of the programs are currently occupying prominent positions in the public and private sectors. Some of the graduates have gone on to undertake Doctoral program in the fields related to development studies such as governance studies, science & technology policy, social change, economics, and environment, within the country and abroad.

### PROFESSIONAL MEMBERSHIPS

So far, no specific professional association is available for the alumni of the program to register. However, they may be eligible for membership with ITB Alumni Association (Ikatan Alumni/ IA ITB).

### CURRICULUM

1. The curriculum for master degree program is organized into 3 (three) specialized fields of study:
2. Development Sustainability
3. Modelling of Development System
4. Technology Diffusion in Development Project

### ADDRESS

Institut Teknologi Bandung  
Gedung Sugjanto Soegijoko - Labtek IX A  
Lantai II  
Jl. Ganesa 10, Bandung 40132, Indonesia  
(022) 2504625 (p)  
(022) 2500046 (f)  
081221785106 (mobile phone)  
081221785107 (mobile phone)  
[www.sappk.itb.ac.id/msp/](http://www.sappk.itb.ac.id/msp/) (w)  
[spitb@melsa.net.id](mailto:spitb@melsa.net.id) (e)





# TRANSPORTATION

The broad impact of transportation systems requires an interdisciplinary approach to the planning, design, construction and operation of these systems, especially for a country like Indonesia whose regions are geographically spread out, heavily constrained by harsh natural elements like seas, rivers, forests and mountains, and heterogeneously divided by sociocultural differences and diversities.

Transportation Graduate Program of the School of Architecture, Planning and Policy Development ITB encompasses a wide range of academic disciplines. It draws together a core of essential knowledge from transportation system analysis, transportation planning and policy, transportation operating and control systems, infrastructure management and logistic system, supported by more generic sciences such as modelling system, engineering system, traffic engineering, and economics. Any technical solutions to transportation problems are to be promoted in integration with socio cultural, economic, political and environmental concerns.

Transportation Program is designed as such to satisfy the demand for transportation professionals who comprehend multiple dimensions of transportation planning and management, enabling them to make decisions leading to more economically, socially, and environmentally sustainable transportation systems nationwide at present and in the future.

## MASTER PROGRAM

Commencement semester	: August, January
Duration	: Regular Program : 3 to 4 semesters full-time
Credit units	: 36 minimum
Admission requirements	: Bachelor degree in related fields, Academic Potential Test, English Proficiency Test, Interview. Attendance in preparatory program prior to regular academic program is a requisite.
Degree Granted	: Magister Teknik Transportasi (equivalent to Master of Transportation Planning)

### PROGRAM OUTLINE

Graduates of the program are expected to be professional planners and/or managers who have wide knowledge in transportation planning and management issues, and to be expertise in one of specialized fields highly demanded by the community:

- Transportation System Analysis
- Transportation Planning and Policy
- Transportation Economics and Business
- Transportation and Regional Development

### CAREER OPPORTUNITIES

Graduates of this program find their careers in local government transportation and traffic planning offices, regional and national transportation and traffic planning authorities, as well as private consultants engaged in transportation planning and traffic management.

### PROFESSIONAL MEMBERSHIPS

So far, no specific professional association is available for the alumni of the program to register. However, they may be eligible for membership with ITB Alumni Association (Ikatan Alumni/ IA ITB)

### ADDRESS

Institut Teknologi Bandung  
Gedung Sugijanto Soegijoko - Labtek IX A  
Jl. Ganesa 10, Bandung 40132  
Indonesia  
(022) 2502347 (p)  
(022) 2500996 (f)  
[www.sappk.itb.ac.id/tr/](http://www.sappk.itb.ac.id/tr/) (w)  
[kaproditr@sappk.itb.ac.id](mailto:kaproditr@sappk.itb.ac.id) (e)





## DOCTORAL PROGRAM

Commencement semester	: August, January
Duration	: 3-4 years full-time
Credit units	: 46 minimum for students with similar academic background, and 50 minimum for students with different academic background
Admission requirements	: Master degree in related fields, Academic Potential Test, English Proficiency Test, Interview.
Degree Granted	: Doktor (equivalent to PhD Degree)

### PROGRAM OUTLINE

The doctoral program offers a specialized academic endeavour in the fields of transportation planning and management. The objective of the program is to develop independent research skills and an ability to relate a specific research topic to a broad framework of knowledge in a relevant discipline area. Doctoral candidates develop a capacity to create knowledge and to communicate and disseminate it to the academic community and the general public.

Students will be assigned an academic supervision committee with whom they will work to pursue their research. All students are required to take a qualifying examination before initiating their research for doctoral dissertation. Students who have obtained the status of doctoral candidate and completed their dissertation must pass a final examination and have their dissertation approved by the examination committee.

### CURRICULUM

Since 2013, the doctoral curriculum is divided into 4 (four) consecutive phases:

- First phase: research methodology, colloquium and qualifying or preparatory examination and additional elective courses (in total 14 credits for students with similar academic background, 26 credits for students with different academic background). Students are required to have 12 months residence period in the campus and pass the qualifying examination.
- Second phase: proposal writing (3 credits)
- Third phase: research and dissertation writing (20 credits)
- Fourth phase: Dissertation examination (3 credits)

### ADDRESS

Institut Teknologi Bandung  
Gedung Sugijanto Soegijoko - Labtek IX A  
Lantai 1  
Jl. Ganesa 10, Bandung 40132, Indonesia  
(022) 2502347 (p)  
(022) 2500996 (f)  
[www.sappk.itb.ac.id/tr/](http://www.sappk.itb.ac.id/tr/) (w)  
[kaproditr@sappk.itb.ac.id](mailto:kaproditr@sappk.itb.ac.id) (e)







## TOURISM PLANNING

The challenge to prepare a master plan for national tourism development in the early 1990s has become a milestone for ITB to take tourism as a serious subject matter. Tourism at that time was the country's strategic foreign exchange earner, due to the decrease of national income from oil and gas. A strong political will to further develop tourism industries has encouraged the undertaking of tourism studies and increased the demand for tourism planning. Accordingly, courses on tourism were offered as electives at the Regional and Urban Planning Department ITB. The subject gradually attracted interest of students from planning department as well as from other fields of study.

ITB is not the first higher education to undertake a graduate program on tourism, which mostly started in late 1990s in the management study program. Undergraduate education on tourism in Indonesia is predominantly vocational in nature, serving the increasing need of the growing industry. In response to the aggravating issues in tourism development, resulted from accelerated growth of the industry with all its consequences, ITB in 1993 established a Center for Tourism Research to stimulate interest among students and faculty members. The Center is aimed at accumulating knowledge and experiences through researches as well as lessons learned from cooperation with many local governments and central government.

With the accumulation of knowledge during that period, course materials on tourism could be enriched and expanded. In 2006, a master program on tourism was initiated as an attachment to master of Development Studies program. After a thoughtful consideration and preparation, a full-fledge master program on Tourism Planning was then established in 2010.



## MASTER PROGRAM

Commencement semester	: August
Duration	: Regular Program: 3 semesters full-time
Credit units	: 36 minimum
Admission requirements	: Bachelor or D-4 degree in related fields; Academic Potential Test, English Proficiency Test, Interview.
Degree Granted	: Magister Perencanaan Kepariwisata (M.Par) (equivalent to Master Degree in Applied Sciences)

### PROGRAM OUTLINE

Students of Tourism Planning are required to attend classes, as well as exposed to the real problems that have to be solved in planning studios. Students will also given the opportunities to attend elective courses offered by other related study programs: regional and urban planning, architecture, urban design, and transportation planning.

### CAREER OPPORTUNITIES

With the increasing strategic position of tourism in the national development agenda, the program will be appropriate for faculty members of the many tourism management school, as well as planning school. The program is also beneficial for those who are starting a career at the provincial as well as local (Kabupaten and Kota) government. In addition there is also an increasing need for consultancy services with regards to tourism planning, in line with the fact that tourism is becoming an interest for many if not all provincial and local government. Tourism planning at different levels of government are required by law (Republic of Indonesia Law No. 10 Year 2009).

### PROFESSIONAL MEMBERSHIPS

So far there has been no specific professional association or organization available for tourism planning alumni. Nevertheless, they are eligible to join ITB Alumni Association (Ikatan Alumni/ IA ITB).

### CURRICULUM

Tourism Planning is a 36-credit master program that can be undertaken in 3 consecutive semesters on a full time basis.

web : [www.sappk.itb.ac.id/pariwisata/](http://www.sappk.itb.ac.id/pariwisata/)  
email : [yantis@sappk.itb.ac.id](mailto:yantis@sappk.itb.ac.id)

### ADDRESS

Institut Teknologi Bandung  
Gedung Sugijanto Soegijoko - Labtek IX A  
Lantai 1  
Jl. Ganesa 10, Bandung 40132, Indonesia  
(022) 2502347 (p)  
(022) 2500996 (f)  
[www.sappk.itb.ac.id/pariwisata](http://www.sappk.itb.ac.id/pariwisata)





## LANDSCAPE ARCHITECTURE

**E**nvironmental degradation has become a major issue in the world today, and has been stated explicitly in the Millennium Development Goals program. One of the goals is ensuring environmental sustainability as the main base of every planning. Institut Teknologi Bandung, which has core-competences on science, engineering, art and design, has both vision and mission to become center of excellence in national and international level. Supported by various Research Groups and Research Centers related to the science of planning, engineering, ecology, and cultural history and design, Master Program in Landscape Architecture develops interdisciplinary knowledge that focuses on ecological design.

Master Program in Landscape Architecture is one of academic programs in the School of Architecture, Planning, and Policy Development (SAPPD), Institut Teknologi Bandung. The program was established on 28 August 2012 by a decree from the Rector of ITB (No:208/SK/I1.A/OT/2012), which was previously conducted as a field of study in Architecture Master Program, SAPPD in academic year 2007/2008.

The program is developed based on Landscape Architect Professional Competency, and supported by a professional association (IALI: Ikatan Arsitek Lanskap Indonesia/Indonesian Landscape Architects Association). The Master program is oriented towards the development of graduates competency to implement the knowledge of Landscape Architecture in response to current environmental issues, such as environmental improvement projects, planning with specific issues (post-mining, heritage, and tourism), and urban green open space.

## MASTER PROGRAM

Commencement semester	: August
Duration	: 4 semesters full-time
Credit units	: 36 minimum
Admission requirement	: Bachelor degree in architecture, landscape architecture, and other related fields, Academic Potential Test, English Proficiency Test, Interview. Additional portfolio of previous design works will be appreciated.
Degree Granted	: Magister Arsitektur Lanskap (M.Ars.L.) (equivalent to Master Degree)

### PROGRAM OUTLINE

The Master program in Landscape Architecture aims to develop skills and attitude of a landscape architect, which are emphasized on problem solving ability as a basic competency. The learning process is directed to the development of students' professional attitude, as well as problem solving skill through group and individual works in studio, field studio, and excursions to various places with specific topic/theme.

### CAREER OPPORTUNITIES

Graduates of our Master program are occupied as landscape architects in various consulting companies as well as other related field of works.

### PROFESSIONAL MEMBERSHIPS

The alumni of Master program in Landscape Architecture are eligible to join Indonesian Landscape Architects Association (Ikatan Arsitek Lanskap Indonesia/ IALI), as well as ITB Alumni Association (Ikatan Alumni/ IA ITB).

### CURRICULUM

The curriculum is designed to develop students' competency to integrate the principles of regional planning, the understanding of social and cultural problems in developing countries, natural and cultural system in a society, and information technology into the design process and concept. Landscape Architecture Studio as a core course consists of several design practices that address current environmental issues.

### ADDRESS

Kampus ITB-Jatinangor  
Jl. Raya Sumedang, Kab. Sumedang

Institut Teknologi Bandung  
Gedung Laboratorium Teknik (Labtek) IX-B  
Jl. Ganesa 10, Bandung 40132, Indonesia  
(022) 2504962 (p)  
(022) 2530705 (f)  
[www.sappk.itb.ac.id/arlanskap/](http://www.sappk.itb.ac.id/arlanskap/) (w)  
[arsitekturlanskap@sappk.itb.ac.id](mailto:arsitekturlanskap@sappk.itb.ac.id) (e)





# ACADEMIC ACTIVITIES



# KAAB ACCREDITATION FOR ARCHITECTURE PROGRAM



**Figure 1**  
KAAB Certificate for Architecture Program (Bachelor and Master)

Since January 2016, architecture program has gained an international accreditation from KAAB (Korea Architectural Accreditation Board). Undergraduate and Master Program (design stream) are the programs that accredited by KAAB, including professional program integrated with Master Program. KAAB (<http://eng.kaab.or.kr/>) is a well-known architectural accreditation institution, which is lead by the Federation of Institutes of Korea Architects (FIKA), part of Canberra Accord on Architectural Education Ratified, and officially recognized by UNESCO-UIA. The main object of their roles is to contribute in the development of programs that give inspirations on the significant roles that architects take in the society, and programs that train young prospects that are ready to begin their professional careers.

# ASIIN ACREDITATION FOR URBAN AND REGIONAL PLANNING



**Figure 2**  
ASIIN Certificate for Urban and Regional Planning Program

In 2018 the urban and regional planning undergraduate program gained international accreditation from ASIIN (Akkreditierungsagentur für Studiengänge der Ingenieurwissenschaften, der Informatik, der Naturwissenschaften) of Germany. ASIIN (<https://www.asiin.de/en/>) is a well-known institution specializing in assuring and strengthening the quality of academic education, especially engineering, natural sciences, and interdisciplinary bachelor and master programs, in many countries. SAPPD regards accreditation as part of an on-going and continuous cycle of improvement, driven by the motivation to provide a world-class urban and regional planning program in Indonesia.



The ASIIN seal is awarded to a degree programme which fulfils the requirements of academic and professional (AQ) or the respective disciplines on a global level, at the same time to ensure that the conditions for governing and assessing learning are optimal. The award of the label is based on recognized learning outcomes achieved subject to specific standards, aligned with the European Qualifications Framework and the „European Standards and Guidelines“.

## CURRICULUM DISCUSSIONS



Curriculum in each study program within SAPPD ITB was designed in such a way to equip students with knowledge and skill capacity that corresponds to the development of knowledge and its application in an ever changing working world. In an effort to keep abreast with the development, SAPPD ITB routinely and continuously updates its curriculum every 5 years.

To maintain its standard, quality, and conformity with national and international levels, the curriculum is adapted with standard of competence set by some national and international accreditation boards.

**Figure 3**  
The Drafting of strategic plan for research and curriculum for teaching. It is conducted regularly to improve the curriculum.



## CONFERENCES



41

**Figure 4**  
The 9th International Conference on Building Resilience, Bali 2020

**Figure 5**  
Dr. Shinji Yamamura as one of the Invited Speakers gave presentation at The 4th International Conference of Habitechno, Bandung 2019

**Figure 6**  
Main Session Discussion at The 4th International Conference of Habitechno, Bandung 2019





## PUBLIC LECTURES

1



**Figure 1**

Prof. Christopher Silver as public lecture explaining the challenges and opportunities for planning the sustainable and smart Indonesian City



Every semester, SAPPD ITB organizes public lectures on a wide variety of topics and aimed at a general audience. The School routinely invites politicians and decision makers in the government to share their experiences. Many of the speakers are leaders in their field and all have something of special interest to convey.

Our lectures cover a wide range of disciplines and frequently include key contemporary issues, particularly those that related to build environment issues. All lectures are free and open to all, with spaces allocated on a first-come first-served basis. Many leaders, such as minister, governor and mayor were graduated from ITB, they came back to campus to share their expertise and experiences to the students and faculty members.

## GUEST LECTURES

42

2



**Figure 2**

Guest Lecture by Ir. Harry Soedarsono an experienced entrepreneurs more than 30 years in property and design



A number of courses in SAPPD ITB have routinely invited practitioners and experts from industrial world, both foreign and domestic, to give lectures that are open for students and faculty members at SAPPD ITB.

This guest lecture is part of special courses that opens up students insight on progress in the world, particularly industry, profession, and practitioners.



## WORKSHOPS



**Figure 3**  
Workshop on Connective Cities 2019, a collaboration project between Urban and Regional Planning ITB, GIZ, Apeksi, and UCLG ASPAC.

Interaction between academician and practitioners is implemented in the form of workshop and training. Workshop and training have become routine agenda of SAPPD ITB in cooperation with government institution, professional institution, etc.

This workshop aims at training students to further understand the real field condition and to work with real objects. In addition,

the workshop also discusses the latest issue and the possibility of research development toward new direction developing outside.

Various discussions on the topic of development issues in Indonesia with international and national experts on the latest issues, such as smart city, the development of architecture and planning education in Indonesia, and housing and settlement planning that correspond to our society condition.



## JOINT STUDIOS

In cooperation with campuses in Indonesia and abroad, the studio course in SAPPD ITB routinely conducts joint studio with a hope that the learning experience in the studio could widen the insight of the students, could see different way of working among the two study programs, and could become a benchmark of a good assignment.

Joint studio also an event to increase capacity and working process at ITB campus.



**Figure 4**  
Survey Activity as part of Collaboration Studio in Re-Inventing Cikapundung River, 2019)





SAPPD - ITB

# RESEARCH GROUPS

# RESEARCH INTEREST

Research activity are maintained at a high level by 9 (nine) Research Divisions, covering key areas as follows:

---

## Architectural Design

- Ecological design
- High density living
- Digital architecture and Computational Design
- Landscape Architecture
- Architectural Conservation & Cultural Heritage

---

## Building Technology

- Appropriate building technology
- Energy efficient building

---

## Housing and Human Settlement

- Morphology, transformation of settlement and dwelling process
- Housing construction process and habitability
- Housing demands, needs and preferences
- Community based housing and settlement

---

## Architectural History, Theory and Criticism

- Transformation of dwelling culture
- Architecture and contemporary lifestyle
- Historiography of Indonesian architecture

---

## Regional and Rural Planning

- Planning and development of metropolitan area
- Planning and development of remote area
- Core-periphery relation
- Management of Indonesia's maritime continent

---

## Urban Planning and Design

- Academic concept of town planning standard
- Urban housing and land development
- Peri-urban development
- Development of urban economic basis

---

## Regional and Urban Infrastructure System

- Infrastructure system engineering and sustainability of regional and urban development
- Institutional development and the financing of infrastructure development
- Development of access to Infrastructure services

---

## Policy Planning and Development Management

- Metropolitan governance analysis
- Fiscal impact analysis
- Local preference analysis
- Urban politics analysis

---

## Economic System and Modelling

- Innovation economics & technology choice
- Spatial economics & planning
- Economics of infrastructure & the environment
- Economic Modelling & System of economic



# ARCHITECTURAL DESIGN



(Courtesy: Perdana, 2019)



Architectural Design Research Group focuses on learning, developing, and teaching knowledge which are the basis of architecture school. The research group develops knowledge and research

related to tropical and developing countries. It examines the design theories and skills that developed from the experiences of various architects or professional practice.

The scope of knowledge covers four main areas of study; (1) Building Design, (2) Urban Design, (3) Landscape Architecture, and (4) Environment and Behaviour. The expertise that developed in this research group is associated with building form, making place, design theories, design approaches, design methodologies, facility programming, and strategic planning for architecture and design. Architectural Design Research Group actively develops and shares its idea not only in the form of research but also from various activities, such as competition, workshop, and teaching. Architectural Design Research Group also engages collaboration with several institutions with different scope of fields.

## TEAM



**Widjaja Martokusumo**  
Professor  
Ir. (ITB), Dr.-Ing. (Kassel).

Architectural and urban design; architectural and urban heritage conservation and revitalization



**Aswin Indraprastha**  
Associate Professor  
ST., MT. (ITB), M.Eng., Ph.D. (Shibaura).

Design & computation: spatial modelling, agent-based simulation, algorithmic modelling, and game engine-based visualization.



**Agus Suharjono Ekomadyo**  
Associate Professor  
ST., MT. (ITB), Dr. (ITB).

Urban design policy; digital architecture



**Hanson Endra Kusuma**  
Associate Professor  
ST. (ITB), M.Eng., Dr.Eng.  
(Tokyo).

Environment and behavior;  
morphology of space and  
form; research methodology;  
quantitative data analysis



**Firmansyah**  
Assistant Professor  
ST., MT., Dr. (ITB).

Architectural design; visual  
analysis method; landscape  
architecture



**Heru Wibowo Poerbo**  
Assistant Professor  
Ir. (ITB), MURP. (Hawaii), Dr.-Ing.  
(Kaiserslautern).

Urban design and urbanism;  
computer application in urban  
design



**Mochamad Prasetyo E. Yasin**  
Assistant Professor  
Ir. (ITB), M.Arch., MAUD.  
(Colorado), Dr. (ITB).

Architectural and urban design;  
theory and methodology of  
spatial analysis; environment  
and behavior



**Widiyani**  
Assistant Professor  
ST, MT (ITB) PhD (Candidate -  
TU Eindhoven)

Architectural design; interior  
architecture; behavior and  
lifestyle in architecture



**Woerjantari Kartidjo**  
Assistant Professor  
Ir., MT., Dr. (ITB).

Urban conservation; urban  
design and studies; hospital  
design; environment and  
behavior



**Achmad Deni Tardiyo**  
Assistant Professor  
Ir. (ITB), MUDD. (UNSW).

Architectural design, urban  
morphology; political economy  
of architecture and urbanism



**Basauli Umar Lubis**  
Assistant Professor  
Ir. MSA (ITB), PhD (MIT)

Architectural design; place  
making; urban tourism



**Baskoro Tedjo**  
Assistant Professor  
Ir. (ITB), MSEB. (Polytech. U. New  
York), Ph.D. (Osaka).

Architectural design;  
environment and behavior



**Budi Faisal**  
Assistant Professor  
Ir. (ITB), MAUD., MLA.  
(Colorado), Ph.D. (Melbourne).

Architectural design; landscape  
architecture



**Endang Triningsih**  
Assistant Professor  
Ir. (ITB), MSP (ITB), MLA.  
(Wisconsin), Ph.D.  
(Melbourne).

Urban landscape; Asian  
urbanism; urban informality;  
indigenous landscape



**Rr. Diah Asih Purwaningrum**  
Ir., MT. (ITB), Ph.D. (Candidate -  
Melbourne)

Architectural Design, Teaching  
Methods



**Erika Yuni Astuti**  
Lecturer  
ST., MT. (ITS), Dr.-Ing. (TU  
Darmstadt).

Conservation of built heritage  
area; public perception of the  
historic environment



**Medria Shekar Rani**  
Lecturer  
ST, MT (ITB), Ph.D. (Candidate  
- Sheffield).

Architectural design; landscape  
architecture



**Titik Savitrie**  
Lecturer  
Ir. MT (ITB)

Architectural design; landscape;  
facility management



**Tubagus Muhammad Aziz  
Soelaiman**  
Lecturer  
ST.(ITB), MA. (Kingston)

Architectural Design, Urban  
Design



**Mohammad Zaini Dahlan**  
Lecturer  
Dr.GES.() S.P.M.Si()

Landscape architecture  
in planning, design, and  
management based on eco-  
cultural landscape approach

S.P.m M.Si. (IPB), Dr.GES (Kyoto)



**Asep Darmana**  
Lecturer  
S.T., () M.Ars ()

Architectural and Urban Design  
in planning, design, and  
management based on eco-  
cultural landscape approach

S.T. (ITB), M. Ars. (ITB)



**Annisa Safra Riska**  
Lecturer  
S.Ars., () M.Ars. ()

Architectural design; behavioral  
architecture; sensory design

S.Ars. (UI), M.Ars. (ITB)



**Nissa Aulia Ardiani**  
Lecturer  
S.T.() M.Sc. ()

Sustainable design architecture;  
passive design architecture;  
building retrofit

S.T. (ITB), M. Sc. (Nottingham)





## BUILDING TECHNOLOGY



*(Courtesy of Permana)*



Building Technology Research Division consists of six areas of study; (1) Building System, (2) Building Performance, (3) Architectural Project and Construction Management, (4) Building and Environment Control, (5) Architectural Disaster Mitigation, and (6) Architectural Computation and Modeling.

The six areas of study are an outgrowth of the three main study areas, namely: the structure of the building, construction management and building science, which became the embryo of a variety of professional activities and current research. It was recognized that the academic / educational architecture cannot grows without professional activities as a practice field / applied technology in architecture.

The current rapid development of the knowledge of building technology has been driven by several factors such as environmental degradation, scarcity of energy and natural resources and also by the progress of management science and computing.



## TEAM

**Sugeng Triyadi S.**

Professor  
Ir., MT., Dr. (ITB).

Building system; building performance and service life; vernacular building technology

**Dewi Larasati**

Associate Professor  
ST., MT. (ITB), Ph.D. (Kochi).

Construction management; sustainable construction; project delivery service

**Surjamanto W.**

Associate Professor  
Ir. (Unibraw), MT. (ITB), Dr. (ITB)

Urban thermal environment; building material and technology; building structure and technology

**Andry Widoyijatnoko**

Assistant Professor  
ST., MT. (ITB), Dr-Ing. (RWTH Aachen).

Structural design; appropriate technology for developing countries; bamboo construction

**Lily Tambunan**

Assistant Professor  
Ir (Unhas), MT (ITB), Dr (ITB)

Building technology and safety

**Mochamad Donny Koerniawan**

Assistant Professor  
ST. (UGM), MT. (ITB), Dr. (Kitakyushu)

Urban and architectural modeling and simulation; building energy

**Permama**

Lecturer  
ST., MT. (ITB)

Building operation, performance and management

**Robby Dwikojuardi**

Lecturer  
Ir. (ITN Malang), MT. (ITB), Ph.D. (Candidate - UTM)

System and building performance

**Dibya Kusyala**

ST., MT. (ITB)

Building System, Structure and Construction

**Fauzan Ali A.**

ST., MT. (ITB)

Building Information Modelling (BIM), Virtual Reality (VR)

**Suhendri**

ST. (ITB), MSc (Nottingham)

Sustainable Architecture, Green Design

**Rakhmat Fitranto Aditra**

ST., MT. (ITB)

Structure, Construction, and Algorithmic Design Approach

**Hafshah Salamah**

ST., MT. (ITB)

Building System, Structure and Construction

**Irma Handayani Lubis**

S.T., (ITB) M.Sc. (Nottingham)

Structure; sustainable architecture



SAPPD – ITB

## HOUSING AND SETTLEMENT



Housing and Settlement Research Group is the pioneer in the development of research and studies about housing and settlement as an independent knowledge to answer

the issue and problem of developing country like Indonesia.

As the vision and mission of the department, Housing and Settlement Research Group currently is developing an applied knowledge which concerned with: (1) Housing and settlement development planning and design process in urban and rural context, (2) Formulation of built environment and settlement development policy based on community in scale of urban and rural.

There are four aspect of research in this research group;

- (1) Morphology or transformation of dwelling process,
- (2) Housing construction process and inhabitability appropriateness,
- (3) Environmental impact of settlement,
- (4) Demands, need, and preference of settlement environment.





## TEAM



**Agustinus Adib Abadi**

Associate Professor  
Ir. (ITB), MSc. (UCL),  
Dr. (ITB).

Architectural design;  
housing planning and  
design



**Wiwik Dwi Pratiwi**

Associate Professor  
Ir. (ITB), MES. (York),  
Ph.D. (Sheffield).

Housing and settlement;  
tourism studies  
and planning; built  
environment and  
traditional communities



**Allis Nurdini**

Assistant Professor  
ST, MT, Dr. (ITB).

Housing need and  
demand analysis; housing  
typo-morphology;  
research methodology for  
housing and settlement



**Boedi Darma Sidi**

Assistant Professor  
Ir. MSA. (ITB),  
Dr-Ing. (TH Darmstadt).

Urban low income  
housing and settlement;  
earthquake mitigation  
studies; infrastructure and  
human settlement



**Indra Budiman Syamwil**

Assistant Professor  
Ir. (ITB), MSc. BEM (UCL),  
Ph.D. (Tsukuba).

Human settlement  
studies; construction  
industry development and  
management; regional  
science and development;  
research methodology  
and design studies



**Mohammad Jehansyah  
Siregar**

Assistant Professor  
ST., MT. (ITB), Ph.D.  
(Tokyo).

Housing and settlement



**Tri Yuwono**

Lecturer  
Ir., MT. (ITB).

Building technology



**Samsirina**

ST., MT., Dr. (ITB)

Human settlement and  
environmental psychology



**Sri Suryani**

ST (ITB), M.Sc (UCL)

Participatory design &  
river dwelling



## ARCHITECTURAL HISTORY, THEORY AND CRITIQUE



(Courtesy: Permana, 2019)

History, Theory, and Criticism in Architecture Research Group (HTCA-RG) specializes in research in the field of Urban and Architectural history, theory and criticism.

There are five main areas of study; (1) Dwelling culture, local knowledge and vernacular architecture of ethnic community in Indonesia. (2) Development of architecture and urbanism in Indonesia, (3) Relevant application of state of the art theoretical and methodological perspective, (4) Architecture and urbanism critic based on formal paradigm and alternative paradigm, and (5) Documentation of idea and work of Indonesian architect or architectural community.

The researches of History, Theory, and Criticism in Architecture Research Group are aimed to give comprehensive understanding about architectural phenomena with its context and the power that influence it.



## TEAM



Iwan Sudradjat

Professor  
Ir., MSA. (ITB).  
Ph.D. (Sydney).

Historiography of  
architecture; theory of  
architecture; research  
methodology; gender and  
built environment



Himasari Hanan

Associate Professor  
Ir. (ITB), MAE. (Leuven),  
Dr-Ing. (Kassel).

Theory of architecture  
and urban design;  
history of modern and  
urban architecture;  
urban studies; creative  
industries



Arif Sarwo Wibowo

Assistant Professor  
ST., MT. (ITB),  
Dr-Eng. (Tokyo).

History of urban and  
architectural design;  
colonial architecture



Bambang Setia Budi

Assistant Professor  
ST., MT. (ITB),  
Dr-Eng. (Toyohashi).

Islamic architecture;  
vernacular architecture;  
theory of architecture and  
urbanism



Indah Widiastuti

Assistant Professor  
ST., MT. (ITB), Ph.D. (Anna,  
India).

Vernacular architecture;  
dwelling culture



Christina Gantini

Lecturer  
Ir., MT. (ITB), Dr. (UNPAR).

History and theory of  
architecture



Feni Kurniati

ST (UI), MT (ITB)

Vernacular architecture  
and modernism





SAPPD – ITB

## REGIONAL AND RURAL PLANNING



(Courtesy: Perda, 2019)



Aims to be a center of excellence in research in the field of regional and rural planning, promoting integrated, equitable, and sustainable regional development, regional and rural planning research group covers wide range of research topics, which are classified into three main topics, namely Environmental Planning and Management, Regional Policies and Governance, and Rural Transformation and Community Development.

Each topic consists of various research interests. Environmental Planning and Management includes Disaster management, Climate Change and regional development, Riverbasin management, Ecotourism development, and Coastal and marine development. Under the topic of Regional Policies and Governance, there are Regional economics, Local economic development, and Megaurban and Periurban Development. As for Rural Transformation and Community Development topic, Endogenous development, Rural Development and Planning, and Community development becomes its main interests.



TEAM



**Arief Rosyidie**

Professor  
Drs. (UGM), MSP. (ITB),  
M.Arch., Ph.D. (Leuven).

Tourism planning; disaster  
management; population  
and regional development



**Delik Hudalah**

Associate Professor  
ST, MT (ITB), M.Sc., Ph.D.  
(Groningen)

Suburbanization; peri-urban  
and metropolitan planning;  
regional governance;  
planning theory



**Djoko Santoso Abi Suroso**

Associate Professor  
Ir. (ITB),  
Ph.D. (Queensland).

Natural and rural systems  
management



**Hastu Prabatmodjo**

Associate Professor  
Ir. (IPB), MS. (Florida State),  
Ph.D. (Queensland).

Rural and regional  
development;  
industrialization and  
industrial development;  
population



**Tubagus Furqon Sofhani**

Associate Professor  
Ir. (ITB), MA. (ISS),  
Ph.D. (Illinois).

Capacity building & regional  
development;  
diffusion  
of innovation and social  
network; climate change  
and regional development



**Wilmar A. Salim**

Associate Professor  
ST. (ITB),  
M.Reg.Dev. (Queensland),  
Ph.D. (Hawaii).

Poverty and  
decentralization



**Rintakasari Vitri  
Ayuningtyas**

Lecturer  
ST. (UNWIM), MT. (ITB).

Rural Planning; Land  
management



**Fikri Zul Fahmi**

ST. (ITB), M.Sc.,  
Ph.D. (Groningen)

Regional development  
and governance, Creative  
industries and regional  
economic development



**Tessa Talitha**

ST (ITB), MA (Erasmus)

Urban & metropolitan  
governance and regional  
planning



**Yuni Nurhayati R.**

ST., MT. (ITB).

Regional governance;  
coastal development;  
participatory and rural  
planning



**Adiwan Fahlan Aritenang**

Assistant Professor  
ST. (ITB), M.GIT.  
(Melbourne),  
Ph.D. (UCL).

Urban and regional  
planning, regional  
economics, economic  
geography, and trade  
liberalisation



**Saut Aritua H. Sagala**

Assistant Professor  
ST. (ITB), M.Sc. (ITC),  
Ph.D. (Kyoto).

Regional and urban  
planning; participatory and  
rural community planning;  
disaster management;  
quantitative analysis  
and GIS



**Teti Armiati Argo**

Assistant Professor  
Ir. (ITB), MES. (York),  
Ph.D. (UBC).

Community based planning  
and disaster management;  
ecological politics of  
clean water; urban-rural  
linkages; environment and  
management



**Hadi Nurtjahjo**

Lecturer  
Ir., MT., Dr. (ITB).

Carrying capacity; urban and  
regional hydrology; land use  
modelling



**Uly Faoziyah**

Lecturer  
ST., MT.

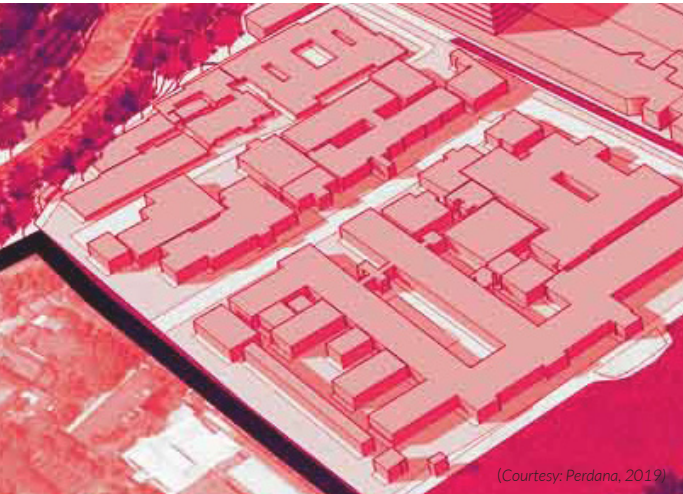
Decentralization; regional  
and marine planning;  
system and spatial  
dynamics; social capital





SAPPD – ITB

## URBAN PLANNING AND DESIGN



Urban Planning and Design Research Group (UPDRG) is an expertise group within the School of Architecture, Planning and Policy Development – Institut Teknologi Bandung (ITB), specializing in research and practical field of urban planning and design.

It is concerned with promoting humane and sustainable forms of urban development, understanding rapid urbanization and encouraging innovation in the policy, planning and management responses to the economic, social and environmental development of cities and regions in Indonesia.

The central purpose of UPDRG is to apply consulting and policy advice to governments and private sector, of which the knowledge are accumulated for academic and teaching activities in the Department of Urban and Regional Planning.



## TEAM

**Roos Akbar**

Professor  
Ir. (ITB), M.Sc. (ITC),  
Ph.D. (Queensland).

Urban land use planning  
and management;  
planning information  
system; geographical  
information system

**Haryo Winarso**

Professor  
Ir. (UGM), M.Eng. (AIT),  
Ph.D. (UCL).

Land, housing and  
property development;  
urban design; inner-city  
redevelopment; planning  
theory; peri-urban  
development

**Denny Zulkaidi**

Associate Professor  
Ir. (ITB), MUP. (McGill),  
Dr. (ITB).

Urban planning and  
design; planning  
law and institution;  
land management;  
development and design  
control

**Iwan Kustiwan**

Associate Professor  
Ir., MT. (ITB), Dr. (UI).

Urban environment  
planning and  
management; urban  
spatial planning and  
management; land and  
housing development and  
management

**Ridwan Sutriadi**

Associate Professor  
ST., MT. (ITB),  
Ph.D. (Florida).

Urban and land use  
planning; urban structure  
and pattern; ICT in urban  
areas

**RM. Petrus Natalivan  
Indradjati**

Assistant Professor  
ST., MT., Dr. (ITB).

Urban planning and  
design; site planning,  
development and design  
control; urban history and  
development; urban form  
and transportation

**Sugiyantoro**

Lecturer  
Ir. (ITB), MIP. (Stuttgart),  
Ph.D. Candidate (UCL).

Urban infrastructure  
planning, policy and  
management; urban  
development planning  
and policy; inner city  
revitalization

**Niken Prilandita**

Lecturer  
ST. (ITB), M.Sc. (AIT),  
Ph.D. (Kyoto).

Urban environmental  
management; urban  
planning; energy science.

**Rina Priyani**

Lecturer  
ST., MT. (ITB), Ph.D.  
Candidate (UC Berkeley)

Urban planning;  
conservation of urban  
environment; tourism  
planning

**Bagas Dwipantara Putra**

ST. (UNTAR), MT. (ITB),  
Ph.D. (RMIT).

Urban design, urban  
kampung, low income  
settlement, urban  
minorities, qualitative  
research

**Farida Khuril Maula**

ST. (ITB) M.Sct. (AIT).

Urban environmental  
management; statistics  
planning; planning  
information system;  
geographical information  
system

**Afrizal Ramadhan**

ST., M.PWK. (ITB)

Urban planning; smart city



SAPPD – ITB

## REGIONAL AND URBAN INFRASTRUCTURE SYSTEM



and researchers who are interested in transportation and infrastructure planning as well as its policy implication to urban development.

Together with the other expert groups in the faculty, RCIS-RG supports academic activities at the Department of Regional and City Planning and the Department of Transportation. Students at all level (undergraduate and graduate) who interested in various topics concerning infrastructure and transportation planning, policy, and management are encouraged to undertake their academic activities under the supervision of our members.



Regional & City Infrastructure System Research group (RCIS-RG), School of Architecture, Planning and Policy Development (SAPPD), Institut Teknologi Bandung (ITB) is a group of expertise within the faculty which consists of professors

Furthermore, RCIS-RG cordially invite you to co-operate with us particularly in research, collaborative seminar, or exchange activities in relation to transport and infrastructure planning, policy, and management. RCIS-RG offer collaborative activities based on mutual benefit principle.





## TEAM

**Binsar PH Naipospos**

Associate Professor  
Ir., MSP. (ITB), Dr. (ITB).

Urban and regional  
planning; transportation and  
infrastructure planning

**Heru Purboyo Hidayat P.**

Associate Professor  
Ir. (ITB), DEA,  
Dr. (Paris VIII).

Urban and regional planning;  
infrastructure management

**Ibnu Syabri**

Associate Professor  
B.Sc., M.Sc. (Kentucky),  
Ph.D. (Illinois).

Regional science; RS  
and GIS; transportation  
simulation and  
modeling

**Miming Miharja**

Associate Professor  
Ir. (ITB), M.Sc.Eng. (Leeds),  
Ph.D. (Groningen).

Urban and regional planning;  
transportation planning

**Sri Maryati**

Associate Professor  
ST. (ITB), MIP. (Stuttgart),  
Dr. (ITB).

Urban and regional planning;  
infrastructure planning

**Shanty Yulianti Rachmat**

Assistant Professor  
ST, MT (ITB), M.Sc.  
(Groningen), Ph.D.  
(Florida)

Transportation & landuse  
interaction; transportation  
demand management;  
parking management

**I Gusti Ayu Andani**

Lecturer  
ST., MT. (ITB),  
Ph.D. (Twente).

Transportation modelling

**Lisna Rahayu**

ST (ITB), M.Sc.  
(Groningen).

Interaction of  
transportation and land  
use

**Ulfah Aliifah Rahmah**

Lecturer  
S.T., M.T. (ITB)

Urban Infrastructure and  
Transportation Planning

**Ninik Suhartini**

S.T. (ITB), MURP, Dr.  
(Sydney)

Urban governance  
and management in  
developing countries;  
inclusive urbanism;  
basic services and  
infrastructure



SAPPD – ITB

## POLICY PLANNING AND DEVELOPMENT MANAGEMENT



Set up in 2005, this research division intends to contribute effectively to the enhancement of the scholarly scientific knowledge and the practice of policy planning and development management. The research group continuously strives to develop, manage, and deliver knowledge, skills, and attitudes towards effective policies and plans that are relevant to respond the dynamics of issues and problems in local, regional, and national contexts. Supported by highly competent human resources, PPDM-RG seeks to provide insights in bringing the economy, prosperity, modernity, and sustainability for the people.



Policy Planning and Development Management Research Group (PPDM-RG) is a research group established to accommodate faculty members with experience and interest in urban and regional development management, and policy planning.

Key specialization: metropolitan governance, urban management, development management, urban public finance, development finance, planning evaluation, smart city development, urban governance institution, public-private financing, fiscal impact analysis, local preference analysis, urban politics, policy analysis, disaster mitigation.

60



## TEAM

**Benedictus Kombaitan**

Professor  
Ir. (ITB), M.Sc. (Wisconsin-  
Madison), Dr. (ITB).

Development management  
in land use, transportation  
and related environmental  
issues

**Sonny Yuliar**

Associate Professor  
Ir. (ITB), Ph.D. ( ANU).

Technology governance  
and policy; innovation and  
development policy; actor-  
network theory

**Alhilar Furqan**

Assistant Professor  
B.Sc. (UKM), M.Sc., Ph.D.  
(USM).

Tourism planning; urban  
& regional planning;  
sustainable tourism  
planning

**Andi Oetomo**

Assistant Professor  
Ir. (ITB), MPI. (Adelaide).

Public policy planning;  
development institution  
and financing; coastal  
development management;  
conflict management in  
planning

**Harkunti Pertiwi Rahayu**

Assistant Professor  
Ir. (ITB), Dr. (Kochi).

Disaster risk reduction  
master planning; damage  
reduction system;  
contingency planning for  
city; early warning system  
planning

**Buspita Dirgahayani**

Assistant Professor  
ST. (ITB), M.Eng., Dr.Eng.  
(Univ. of Tokyo).

Urban planning; urban  
transportation policy and  
management

**Suhirman**

Assistant Professor  
Drs., SH. (Unpad), MT. (ITB),  
Dr. (ITB).

Participatory planning and  
action research; policy and  
budgeting; institutional  
design and development

**Adenantera Dwicaksono**

Lecturer  
ST(ITB), M.Dev.St.  
(Melbourne), Ph.D. (SUNY  
at Albany).

Public financing;  
institutional & public policy  
development.

**Hanry Kurnia L.**

Lecturer  
ST. (UGM), MT. (ITB)

Urban design; urban policy  
and management

**Happy P. Fadjaruddin A.**

Lecturer  
ST. (ITB), MT. (ITB), Ph.D.  
Candidate (Unpad).

Urban policy and  
management

**Nurrohman Wijaya**

Lecturer  
ST. (ITB), MT. (ITB), M.Sc.  
(AIT), Ph.D. Cand. (AIT).

Urban and regional planning;  
urban environmental  
management; climate  
change adaptation in  
urban area

**Karina Putri**

ST. (ITB), MA. (Zeppelin  
Univ.), Ph.D. candidate  
(Melbourne University).

Public Management and  
Governance, Public Finance,  
Metropolitan Governance,  
Comparative Politics,  
Institutional Theory

**Tizar Muh. Kautsar  
Bijaksana**

ST, MT (ITB).

Participatory planning,  
development management,  
planning theory

**Muhammad Dzaki Naufal**

S.Mn., (ITB), Mint. Mgl. (ANU)

Management; business  
development; tourism  
planning; economic tourism





SAPPD – ITB

## ECONOMIC SYSTEM AND MODELLING



Set up in 2013, this research division intends to help government and decision maker in term of policy analysis. The research group strives to sort out complicated chains of cause and effect and influence between the numerous interacting elements in an economy involving various agencies and institutions that are linked within the system. Supported by highly competent human resources, this group seeks to provide insights for a better and sustainable finance and economic organizations.



Economic system and modelling is a research division that collected faculty members with experience and interest in infrastructure planning, marketing management, economic visual modeling and economic development system.

Key specialization: Infrastructure planning, economic and infrastructure management, economic modelling and methodology, economic development system, economic theory, Aggregate Supply – Aggregate Demand (AS/AD) model, loanable funds model, simulation model, and the IS/LM Model.



## TEAM

**Pradono**

Professor  
SE. (UGM), M.EcDev. (ANU),  
Dr.Eng. (Tokyo).

Regional and city  
economics; transportation  
economics.

**Yogi Makbul**

Professor  
Ir., MS., Dr. (Unpad).

Agriculture economics.

**Ade Triyasa**

Associate Professor  
SE. (Univ. Pattimura), MSi.  
(Unpad).

Environmental economics.

**Munadjat**

Assistant Professor  
S.Pd. (STKIP), MM.  
(Unwim), Dr. (Unpad).

Economic / Marketing  
Management.

**Pringgo Dwiyantoro**

Associate Professor  
SE. (Unpad), MM. (Univ. ARS  
Internasional Bandung), MSi.  
(Unpad).

Cooperatives, small and  
medium enterprises; regional  
and urban economics;  
economic development;  
community based  
development; management  
and policy.

**Deni Nugraha**

Assistant Professor  
SE. (STIE YPKP), MSi.  
(Unpad).

Economic development.

**Edi Kusniadi**

Assistant Professor  
Ir. (Unwim), MP. (Unpad).

Fiscal economics;  
economic development.

**Jamaludin**

Assistant Professor  
SE. (STIE- YPKP), MM.  
(Unwim).

Fiscal policy; Economic  
development.

**Kartib Bayu**

Assistant Professor  
Ir. (Unwim), MSi. (Unpad),  
Dr. (Unpad).

Small and medium  
enterprises;  
entrepreneurial  
economics.

**Siti Herni Rochana**

Assistant Professor  
Ir. (IPB), MSi. (IPB), Dr.  
(Unpad).

Regional and  
urban economics;  
decentralization; fiscal  
policy; spatial economics.

**Ridwan**

Lecturer  
Ir. (ITB), MT. (ITB).

Urban and Regional  
Planning, Transportation  
Planning



## ITB MULTICAMPUS AT CIREBON



(Courtesy: Prasetyo, 2018)

As part of its commitment to promote growth throughout the region, the Cirebon class of Urban and Regional Planning Undergraduate program was initiated in 2016. Whereas the nature of planning studies, though sharing the same curriculum with students in Ganeca campus, the Cirebon class is more exposed to issues customary to Cirebon region, such as rural areas, maritime, and manufacturing. Concordant with the aim of Multi-Campus, the presence of Urban and Regional Planning program in the region is expected to help accelerate growth and expand ITB's engagement and expertise.

## TEAM



Lanthika Atianta

ST, M.Sc. (UGM).



Fika Novitasari

ST, MT (ITB).



Arini Murwindarti

S.Si., M.Sc. (UGM).



Naya Cinantya Drestalita

ST (ITS) MA (Sheffield).

## COMMUNITY SERVICES

**Figure 1**  
Reciprocal structure for multi-functions rooms for the victims of Lombok and Palu disasters, in 2018.



Each year, the undergraduate student association and every research groups hold projects and events dedicated to assist communities, governments, and local businesses. Usually services are attempted to help partners in action planning, business planning, education, network building, and consultation, participatory process in design and construction. SAPPD has partners throughout the country, ranging from communities in both rural and urban areas, to government agencies.



## PUBLICATION



**Figure 2**  
AR ITB Handbook 2019-2020

**Figure 3**  
Studi Perancangan Kabupaten Sumedang by Urban & Regional Planning ITB with BAPPENAS



## SUMMERCAMP



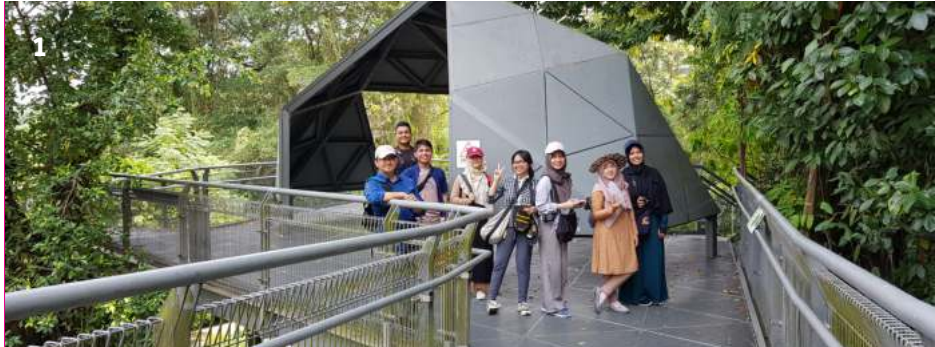
Since 2012, the School of Architecture, Planning and Policy Development (SAPPD) has been conducting an annual Summer Camp Program with the purpose of internationalizing the faculty and encouraging collaboration with globally renowned universities. The theme chosen for 2019 program is "Urban Infrastructure and Community Development by researching the case study of Lebak Siliwangi.

This summer camp 2019 was attended by 44 ITB students, 23 Ritsumeikan University students, and 24 Sydney University students, supervised by lectures from each university.





## EXCURSIONS



**Figure 1**

Master of Landscape  
Architecture Program  
Excursion to Singapore,  
2019 (Courtesy:  
Firmansyah, 2019)



Excursion and field surveys are regular activities in Urban and Regional Planning program. Almost every course demands students to conduct observation and survey of the social and physical features of the environment. Surveys can take few hours to one whole week.

Excursion is conducted at the 2nd year for Architecture as well as Urban and Regional Planning students. It is done by the students together with some lecturer supervisors. For architecture students, the 2018 excursion was done in Solo, Yogyakarta and Semarang by visiting architect bureaus, colonial building in the old city area, and vernacular buildings through observation, measurement and interview with the local community.

## EXHIBITIONS



**Figure 2**

An Exhibition of  
Architectural Design  
Studio Works done by  
4th Year or 7th Semester  
Students (AR4090)  
regarding Mixed-use  
Development



SAPPD is active as participant in exhibition outside campus and becomes the host for other community's exhibition. In addition, SAPPD's works were actively showcased to demonstrate its progress and achievements.



## FACILITIES



**Figure 3**  
Lobby in architecture study program.



**Figure 4**  
Architectural design studio.



**Figure 5**  
Classroom.



## INTERNATIONAL EVENTS



SAPPD is actively involved in international academic and profession activities. In the field of architecture, lecturers and students are active in design competition, workshop and seminar and conferences in the country and abroad to develop capacity in the campus.

Related to profession, Architecture ITB is active in the agenda held by Arcasia as a profession institution in Asia and WAF, held by the International Union of Architect at global level. Similar to Architecture, Urban and Regional Planning Study Program is also active in similar activities with partner campus which has cooperation agreement with ITB.

**67**

**Figure 6**  
Digital Design-Build, An International Student Collaboration project between Architecture ITB, University of Tadulako, IAI Central Sulawesi Province, and Keio University to build a prototype of community hall.





## ACHIEVEMENTS

**Figure 1**

Urban and Regional Planning undergraduate students won First prize in "Paper Competition Padjadjaran Fest and Conference" 2019



**Figure 2**

Architecture undergraduate students won First Prize in "Arrival Design Competition", held by Universitas Islam Negeri Maulana Malik Ibrahim, Malang, in 2019



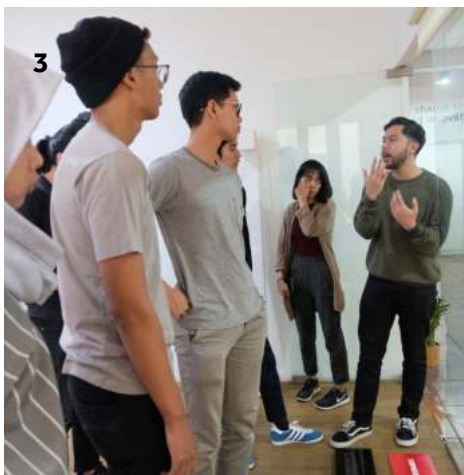
Students from Architecture and Urban and Regional Planning Study Programs are active in national and international competition. Some of the students received awards for their positive contributions to the community.



## STUDENT ACTIVITIES

**Figure 3**

Bandung inclusive trip with disabled community as part of Gaung Bandung 2018 event.



Architecture student association together with Urban and Regional Planning student association are active in academic seminar activities, discussion with local people to build their facilities, and make artwork projects.

## LIBRARIES

No	Type of Library Material	ARCHITECTURE			URBAN & REGIONAL PLANNING		
		S.D. 2018	2019	TOTAL AR	S.D. 2018	2019	TOTAL PWK
		Judul	Judul	Judul	Judul	Judul	Judul
1	2	5	7	9	13	15	17
1	Buku Teks	10.494	265	10.759	7.184	131	7.315
2	Diklat	141	-	141	127	-	127
3	Journal	725	70	795	130	-	130
4	Undergraduate Final Report	2.816	92	2.908	2.412	105	2.517
5	Thesis/Dissertation	1.068	60	1.128	4.400	116	4.516
6	Magazine	1.826	127	1.953	5	-	5
7	Research Report	1.247	-	1.247	-	-	-
8	CD-ROM (CD/DVD)	603	-	603	300	-	300
9	Landscape Architecture Collection (ITB Jatinangor)	326	-	326	-	-	-
10	Proceeding	-	2	2	55	-	55
11	Undergraduate & Master Studio Report	-	-	-	265	-	265
12	Internship Report	-	-	-	103	75	178
	<b>Jumlah</b>	<b>19.246</b>	<b>616</b>	<b>19.862</b>	<b>14.981</b>	<b>427</b>	<b>15.408</b>
		<b>TOTAL</b>			<b>TOTAL</b>		

## STAFFS per 2019

**Section Head**

Dede Koswara, ST

**Sub-Section Head of Academic****Administration**

Dudi Suryadi

**Sub-Section Head of Information System**

Moh Ariful Rahman

**Sub-Section Head of Finance**

Mulyati Rahayu, S.Sos

**Sub-Section Head of Human Resources**

Poppy Juhroniah, S.Sos.

**Sub-Section Head of Infrastructure & Facilities**

Kokom Komariah A.Md

**Academic Administration**

Eming Kamir

Budi Saputra

Dedah Djubaedah

Irma Ramdhayani

Agus Dodi

Wati Sukiwati

Nunung Maulani, SPd

Jeane Rantung, SE.

RMI Sosrowinarsito

Fitri Handayani

Yanti Suheryanti

Ifan Muhammad Fajar

Tati Purwanti, SE.

**Administration Staff**

Sudrajat, A.Md

Technician

Gagan Irena

Adang Deni Sunarya, A.Md.

Yayat Sumardi

Gunawan

Arie Dirgantara

Adila Riansa

**Library Administration**

Edje

Librarian

Yoninur Amira, S.Sos.

Dra. Ipah Saripah

**Finance Administration - Treasurer Section**

Rina Agustina S.IP

**Finance Administration - Accounting Section**

Robby Hermawan

**Finance Administration - Tax Section**

Siti Aisyah

**Finance Administration**

Winda Djohar

Dra. Eliyaningsih

Pratiwi Pudjilestari

Tarsiwad, SAP

Indri Wahyuni, A.Md.

**Human Resource Administration**

Elli Amalia, SE.

**Infrastructure & Facilities Staff**

Akhdad Sidik

**Infrastructure & Facilities Administration**

Djarwono

**General Administration**

Hawiyah

Tatang Safari

Yanti Nurhayati

Dedes Nurgandarum

**Supporting Staff**

Acep Wahyu H.

Sarnya

Carman

Sarwan

Sony Hidayat

Widi Kustiawanda

Ade Rahmat

Samsudin

Atay Idas

Entis Sutisna

Dani Supriyatna

Undang Cahyana

